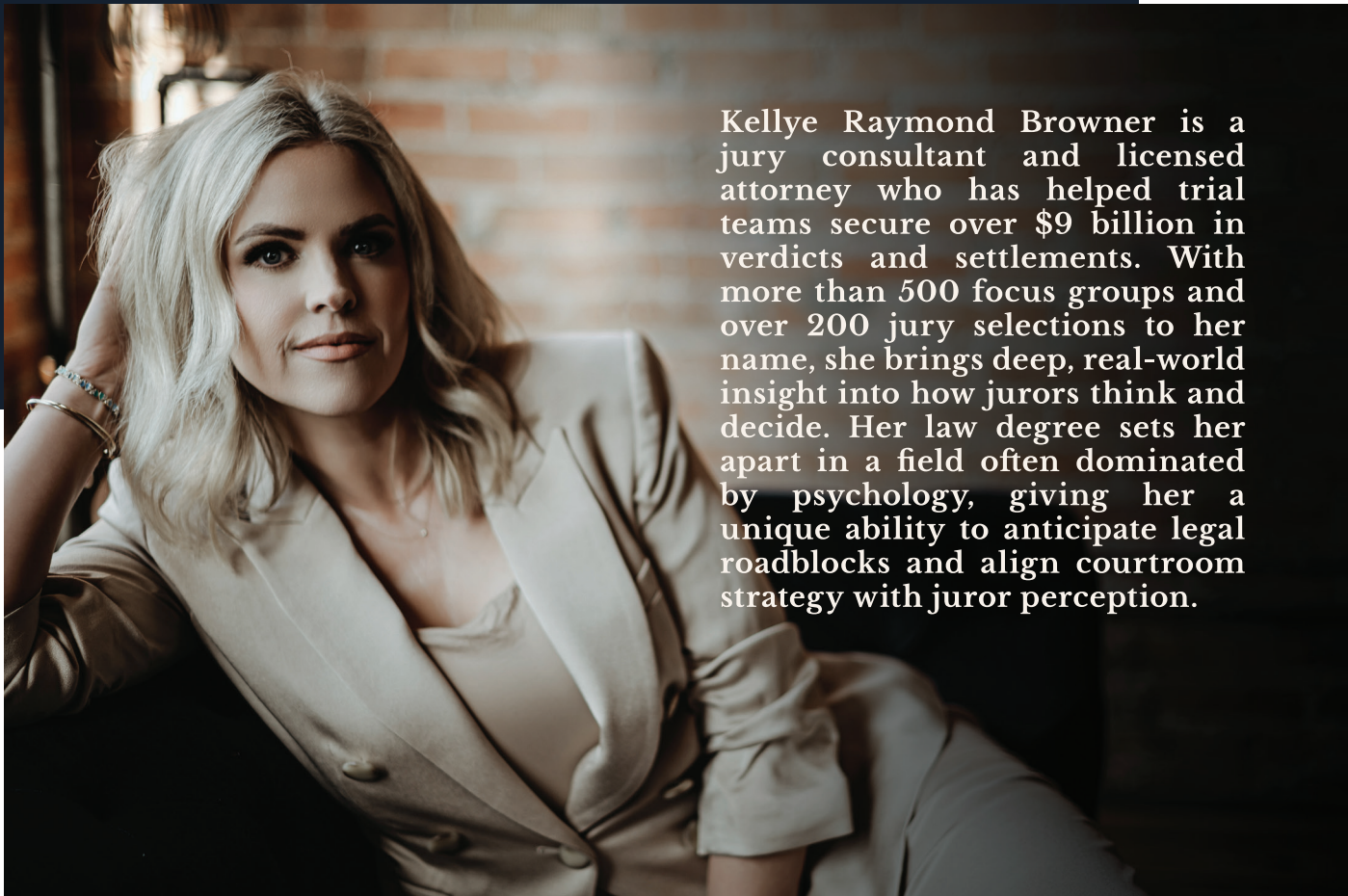


Kellye Raymond Browner

SPEAKER BIO



Kellye Raymond Browner is a jury consultant and licensed attorney who has helped trial teams secure over \$9 billion in verdicts and settlements. With more than 500 focus groups and over 200 jury selections to her name, she brings deep, real-world insight into how jurors think and decide. Her law degree sets her apart in a field often dominated by psychology, giving her a unique ability to anticipate legal roadblocks and align courtroom strategy with juror perception.

Kellye works closely with trial lawyers across the country to refine case themes, prepare witnesses, and develop persuasive courtroom delivery. She helps her clients bridge the gap between legal arguments and real-life decision-making, ensuring that their case is heard—and felt—by the jury. Her approach is rooted in clarity, storytelling, and a deep understanding of people.

At the heart of her work is a commitment to helping attorneys communicate with jurors in a way that connects across backgrounds and perspectives. Kellye believes the best trial strategy doesn't just inform—it moves people to act.

CONTACT:

gdavis@raymondtrialconsulting.com

(469) 372-5509